

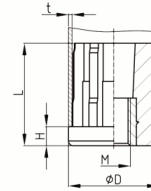
# Gewindestopfen für Rundrohre mit Edelstahlgewinde

## Thread inserts for round tubes with stainless steel threaded

Preise per 05.05.2021 - Änderungen jederzeit möglich  
Prices per 05.05.2021 - may change any time

### RRMS/A2

Gewindestopfen für Rundrohre mit Edelstahlgewinde  
Thread inserts for round tubes with stainless steel threaded



Bestellnummer Order number	D D	F max. F max.	H H	M L	L M	t t	bis 49 up to 49	ab 50 from 50	ab 100 from 100
* RRMS/A2 30x1/M10	30	320	6	M10	35	1	14,7241	13,2439	11,9184
* RRMS/A2 30x1/M12	30	320	6	M12	35	1	14,7241	13,2439	11,9184
* RRMS/A2 30x1/M14	30	320	6	M14	35	1	14,7241	13,2439	11,9184
* RRMS/A2 30x1/M16	30	320	6	M16	35	1	14,7241	13,2439	11,9184
* RRMS/A2 38x1,5/M10	38	550	8	M10	43	1,5	14,5474	13,0894	11,7859
* RRMS/A2 38x1,5/M12	38	550	8	M12	43	1,5	15,8287	14,2491	12,8243
* RRMS/A2 38x1,5/M14	38	550	8	M14	43	1,5	15,8287	14,2491	12,8243
* RRMS/A2 38x1,5/M16	38	550	8	M16	43	1,5	14,7241	13,2439	11,9184
* RRMS/A2 42x1,5/M10	42	650	8	M10	42	1,5	15,8287	14,2491	12,8243
* RRMS/A2 42x1,5/M12	42	650	8	M12	42	1,5	15,8287	14,2491	12,8243
* RRMS/A2 42x1,5/M14	42	650	8	M14	42	1,5	15,8287	14,2491	12,8243
* RRMS/A2 42x1,5/M16	42	650	8	M16	42	1,5	15,8287	14,2491	12,8243
* RRMS/A2 42x1,5/M20	42	650	8	M20	42	1,5	18,3030	16,4694	14,8235
* RRMS/A2 48x1,5/M10	48	800	11	M10	49	1,5	15,8287	14,2491	12,8243
* RRMS/A2 48x1,5/M12	48	800	11	M12	49	1,5	15,8287	14,2491	12,8243
* RRMS/A2 48x1,5/M14	48	800	11	M14	49	1,5	15,8287	14,2491	12,8243
* RRMS/A2 48x1,5/M16	48	800	11	M16	49	1,5	15,8287	14,2491	12,8243
* RRMS/A2 48x1,5/M20	48	800	11	M20	49	1,5	18,4797	16,6241	14,9671
* RRMS/A2 50x1,5/M12	50	850	11	M12	49	1,5	17,3972	15,6631	14,0945
* RRMS/A2 50x1,5/M14	50	850	11	M14	49	1,5	17,3972	15,6631	14,0945
* RRMS/A2 50x1,5/M16	50	850	11	M16	49	1,5	17,3972	15,6631	14,0945
* RRMS/A2 50x1,5/M20	50	850	11	M20	49	1,5	18,9989	17,0990	15,3869
* RRMS/A2 60x1,5/M14	60	1000	12	M14	50	1,5	18,9989	17,0990	15,3869
* RRMS/A2 60x1,5/M16	60	1000	12	M16	50	1,5	18,9989	17,0990	15,3869
* RRMS/A2 60x1,5/M20	60	1000	12	M20	50	1,5	20,5673	18,5128	16,6572
* RRMS/A2 60x1,5/M24	60	1000	12	M24	50	1,5	22,7213	20,4459	18,4024
* RRMS/A2 60x2/M14	60	1000	12	M14	50	2	18,9989	17,0990	15,3869
* RRMS/A2 60x2/M16	60	1000	12	M16	50	2	18,9989	17,0990	15,3869
* RRMS/A2 60x2/M20	60	1000	12	M20	50	2	20,4900	18,4466	16,6019
* RRMS/A2 60x2/M24	60	1000	12	M24	50	2	22,7213	20,4459	18,4024
* RRMS/A2 60x2,5/M14	60	1000	12	M14	50	2,5	20,0372	18,0379	16,2374
* RRMS/A2 60x2,5/M16	60	1000	12	M16	50	2,5	20,0372	18,0379	16,2374
* RRMS/A2 60x2,5/M20	60	1000	12	M20	50	2,5	21,7161	19,5401	17,5850
* RRMS/A2 60x2,5/M24	60	1000	12	M24	50	2,5	22,7213	20,4459	18,4024

Standardfarbe
Schwarz

Material
Gewinde: AISI 304 (A2) Grundkörper: glasfaserverstärktes Polyamid (PA-GF)

Standard colour
Black

Material
Thread: AISI 304 (A2) Body: glassfiber reinforced Nylon

Gewindestopfen für Rohre Thread Plugs for tubes

\* Keine Lagerware, bitte anfragen.

Alle Maße in mm.

Druckfehler, Irrtümer und Änderungen vorbehalten.

Druckfehler und Irrtümer vorbehalten / aktuelle Version siehe

[www.plasticmetall.com](http://www.plasticmetall.com)

Preise in EUR per Stück, netto.

\* Not a stock item, please enquire.

All measure specifications in mm.

Printing errors, mistakes and amendments reserved.

Misprint and mistakes excepted / current version see [www.plasticmetall.com](http://www.plasticmetall.com)

EUR prices per piece, netto.